



Aliaxis
UTILITIES & INDUSTRY



NEW FLS M9.00 LINE

Instruments for Flow, pH/ORP, Conductivity Measurement and Control

NEW FLS M9.00 LINE INSTRUMENTS FOR FLOW, PH/ORP, CONDUCTIVITY MEASUREMENT AND CONTROL

New FLS M9.00 line of monitors and transmitters includes single and dual channel interfaces for different parameters measurement such as Flow, pH, ORP, Conductivity and their combination. The new instruments are powered by a new generation mistake-proof software and are characterized by a 4" full graphic display combined with the traditional 5 push-button keypad.



MAXIMISED PERFORMANCES FOR MAXIMISED SATISFACTION

New input combinations for dual-parameter measurement, more output options.

- **Single and dual parameter monitors**
New FLS M9.00 range includes upgraded single-parameter monitors and advanced dual parameter devices for the combined measurement of Flow, pH, ORP and Conductivity.
- **Efficient and cost-effective solution**
New FLS monitors connected to all FLS insertion paddlewheel sensors, magmeters or in-line sensors as well as to a full range of pH/ORP and conductivity electrodes provide the most efficient and cost-effective solution for a wide range of application.
- **Useful combinations of output options**
The different combination of output options allows to manage several remote functions and devices basing on even one measured value.



A broad proposal for an extended range of applications!

SO POWERFUL, SO SIMPLE

Quick calibration with a guided and mistake-proof system, help on board, customizable devices.

- **Guided calibration procedure**
The new software has been designed to allow the quickest set-up time while following the simple tutorial calibration procedure minimizes the risk of mistakes.
- **No need for instruction manual**
An additional dedicated procedure helps for the very first set-up of the monitor that becomes even more easy and safer.
- **Mistake free setting**
The different menus for basic setting and advanced calibrations are fully supported by indications directly displayed on the screen and by an help on board to better clarify the different options.



Setting operation is a snap!

WIDEN YOUR VIEW

A Wider screen to get more information, more visibility, more calibration support.

- **Long distance visible screen**
The 4-inch full graphic display can show up to 3 different measuring parameters at the same time or a single one in full screen visualization.
- **Leading-edge alert message**
A multicolor backlight will indicate the status of the monitor: normal working condition, calibration mode and an innovative, efficient, red full screen alarm status alert.
- **More info displayed**
The help-on-board suggestions are clearly readable on the screen and the instructions are widely explained in a talky way.

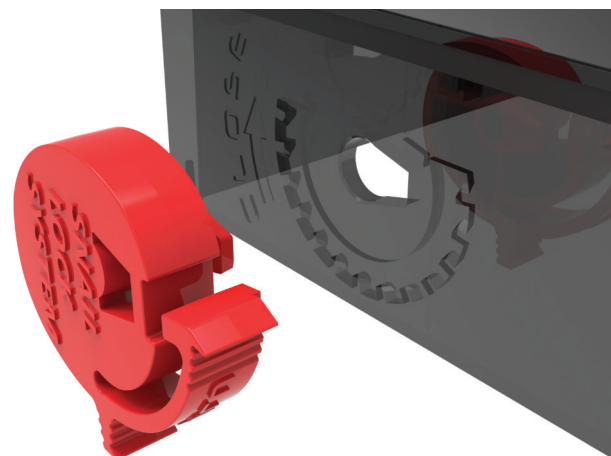


Bright and smart to simplify your life!

ALL YOU NEED IN ANY SITUATION

A rock solid construction with a wide screen suitable for compact, panel or wall mounting installation.

- **Quickest fix-up**
Compact installation, recommended for flow monitors, gets even more reliable thanks to the new water-proof case and a handy fixing system without screws or any other metal parts subject to corrosion.
- **Breaking new fixing snail**
Panel installation is simplified by the new concept fixing "snail". Brackets or other little parts are no longer needed.
- **Larger wiring space**
Wall installation is possible using a special large box perfect to ensure a proper room for a comfortable and safe wiring operation.



Installation is a matter of nothing!

FIP - Formatura Iniezione Polimeri S.p.A.

Loc. Pian di Parata
16015 Casella
Genova - Italy
Tel. +39 010 96211
Fax +39 010 9621209
flsnet.it - fipnet.it

10/2013
LEFLSPROM